



Tie Backs | Soil Nails | Posttensioning | MicroPiles | Rock Anchors | Soil Anchors |

SSSI Threaded hot rolled bar Grade 150 KSI

Nominal Diameter mm	Nominal Diameter Inches	Max OD -Inches- (mm)	Ultimate Strength	Yield Load	Nominal Weight	Area Inch 2 (mm 2)	Ultimate Stress	Elongation	SSSI Part Number
26	1"	1.2" (30.5mm)	130 kips (578 kN)	118 kips (525 kN)	3.01 lbs/ft (4.48 kg/m)	0.85 (548)	150 KSI 1050 MPa	7%	BR26150S
32	1-1/4"	1.43" (36.3mm)	190 kips (836 kN)	171 kips (667 kN)	4.39 lbs/ft (6.54 kg/m)	1.25 (806)	150 KSI 1050 MPa	7%	BR32150S
36	1-3/8"	1.63" (41.3mm)	241 kips (1054 kN)	216 kips (845 kN)	5.56 lbs/ft (8.28 kg/m)	1.58 (1019)	150 KSI 1050 MPa	7%	BR36150S
47	1-7/8"	2.08" (52.7mm)	409 kips (1792 kN)	371 kips (1435 kN)	9.47 lbs/ft (14.10 kg/m)	2.69 (1735)	150 KSI 1050 MPa	7%	BR45150S
57	2-1/4"	2.81" (62.6mm)	600 kips (2668 kN)	480 kips (2135 kN)	14.08 lbs/ft (20.95 kg/m)	4.00 (2581)	150 KSI 1050 MPa	7%	BR57150S
65	2-1/2"	2.81" (71.4mm)	774 kips (3442 kN)	620 kips (2757 kN)	18.20 lbs/ft (27.10 kg/m)	5.16 (3331)	150 KSI 1050 MPa	7%	BR65150S
75	3"	3.20" (81.5mm)	1028 kips (4572 kN)	822 kips (3656 kN)	24.12 lbs/ft (35.90 kg/m)	6.85 (4418)	150 KSI 1050 MPa	7%	BR75150S

- Bars are available in continuous lengths up to 40' & 50'
- All bars are right hand threads.
- To conform to ASTM-A 722

SSSI Threaded Bar Accessories -Grade 150



Hex / Anchor Nuts – Grade 150

SIZE Inches	SIZE mm	Max OD	Length	Weight	Part Number
1"	26mm	2.05" 52mm	3.15" 80mm	1.78 lbs .80 kg	HN26150MC
1-1/4"	32mm	2.52" 64mm	3.54" 90mm	2.82 lbs 1.27 kg	HN32150MC
1-3/8"	36mm	2.76" 70mm	4.33" 110mm	4.23 lbs 1.91 kg	AN36150MC
1-7/8"	47mm	3.50" 89mm	4.72" 120mm	7.4 lbs 3.35 kg	AN47150MC
2-1/4"	57mm	3.74" 95.0mm	4.72" 120mm	10 lbs 4.53 kg	AN57150MC
2-1/2"	65mm	4.25" 108mm	5.12" 130mm	12.24 lbs 5.55	AN65150MC
3"	75mm	4.49" 114mm	5.71" 145mm	14.18 lbs 6.43 kg	AN75150MC

- AN- Anchor Nut Rounded with four flats.
- HN- Hex Nut – Hexagonal.
- All hex nuts and Couplers to exceed 110% of the bar's published.
- Coupler and Nuts are available as Over Size for hot dipped galvanizing and epoxy coating.
- Additional accessories available: Washers, Lock Nuts, Plates, End Caps, centralizers.



Couplers – Grade 150

Max OD	Length	Weight	Part Number
2.01" 51mm	5.91" 150mm	3.74 lbs 1.67 kg	C26150MC
2.36" 60mm	7.09" 180mm	7.04 lbs 3.19 kg	C32150MC
2.68" 68mm	8.27" 210mm	9.27 lbs 4.20 kg	C36150MC
3.27" 83mm	9.45" 240mm	16.6 lbs 7.52 kg	C46150MC
3.74" 95mm	9.45" 240mm	20 lbs 9.07 kg	C57150MC
4.25" 108mm	10.24" 260mm	23.32 lbs 10.57 kg	C65150MC
4.49" 114mm	11.42" 290mm	28.6 lbs 13.97 kg	C75150MC



SSSI
Stressbar Steel Systems International

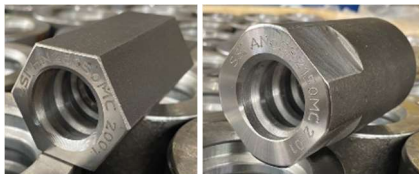


SSSI Threaded hot rolled bar Grade 80 KSI

SIZE	Nominal Diameter mm	Nominal Diameter Inches	Max OD Inches (mm)	Ultimate Strength	Yield Load	Nominal Weight	Area Inch ² (mm ²)	Ultimate Stress	SSSI Part Number
#7	22	7/8"	0.953" (24.9 mm)	58 kips 258 kn	48 kips 213 kn	2.04 lbs/ft 3.04 kg/m	0.6 (387)	80 KSI 550 MPa	BR2280S
#8	25	1"	1.106" (28.1 mm)	83 kips 369 kn	63 kips 280 kn	2.6 lbs/ft 3.97 kg/m	0.79 (510)	80 KSI 550 MPa	BR2580S
#9	28	1-1/8"	1.236" (31.4 mm)	105 kips 467 kn	80 kips 355 kn	3.25 lbs/ft 5.06 kg/m	1.0 (645)	80 KSI 550 MPa	BR2880S
#10	32	1-1/4"	1.413" (35.9 mm)	133 kips 590 kn	102 kips 452 kn	4.25 lbs/ft 6.40 kg/m	1.27 (819)	80 KSI 550 MPa	BR3280S
#11	36	1-3/8"	1.587" (40.3 mm)	163 kips 690 kn	125 kips 553 kn	5.37 lbs/ft 8.00 kg/m	1.56 (1006)	80 KSI 550 MPa	BR3680S
#14	43	1-3/4"	1.886" (47.9 mm)	236 kips 1019 kn	180 kips 798 kn	7.65 lbs/ft 11.38 kg/m	2.25 (1452)	80 KSI 550 MPa	BR4380S
#18	57	2-1/4"	2.465" (62.6 mm)	420 kips 1860 kn	320 kips 1420 kn	13.6 lbs/ft 20.24 kg/m	4.0 (2581)	80 KSI 550 MPa	BR5780S
#20	63.5	2-1/2"	2.717" (69.0 mm)	515 kips 2230 kn	393 kips 1748 kn	16.71 lbs/ft 24.65 kg/m	4.91 (3168)	80 KSI 550 MPa	BR6380S
#24	75	3"	3.209" (81.5 mm)	719 kips 3090 kn	548 kips 2429 kn	23.27 lbs/ft 34.68 kg/m	6.85 (4418)	80 KSI 550 MPa	BR7580S
#28	90	3-1/2"	3.88" (98.6 mm)	1009 kips 4488 kn	769 kips 3420 kn	32.7 lbs/ft 48.65 kg/m	9.61 (6200)	80 KSI 550 MPa	BR8980S
#32	100	4"	4.29" (109.0 mm)	1278 kips 5684 kn	974 kips 4331 kn	41.4 lbs/ft 61.60 kg/m	12.17 (7852)	80 KSI 550 MPa	BR10080S

- Bars are available in continuous lengths up to 40', 50' & 60' – Ask for current stock availability.
- All bars are left hand threads.
- To conform to ASTM-A 615.

SSSI Threaded Bar Accessories – Grade 80



Hex / Collar Nuts – Grade 80

Nominal SIZE	SIZE mm	SIZE Inches	Max O.D.	Overall Length "L"	Part Number
#7	22	7/8"	1.50" 38mm	2.17" 55mm	HN2280MC
#8	25	1"	1.77" 45mm	2.17" 55mm	HN2580MC
#9	28	1-1/8"	1.89" 48mm	2.17" 55mm	CN2880MC
#10	32	1-1/4"	2.24" 57mm	2.36" 60mm	CN3280MC
#11	36	1-3/8"	2.50" 63.5mm	2.76" 70mm	CN3680MC
#14	43	1-3/4"	2.99" 76mm	3.74" 95mm	CN4380MC
#18	57	2-1/4"	3.74" 95mm	4.33" 110mm	CN5780MC
#20	63.5	2-1/2"	4.02" 102mm	4.53" 115mm	CN6380MC
#24	75	3"	4.49" 114mm	5.71" 145mm	CN7580MC
#28	90	3-1/2"	5.24" 127mm	6.69" 170mm	CN8980MC
#32	100	4"	5.75" 140mm	7.50" 190.5mm	CN10080MC



Couplers – Grade 80

Max O.D.	Overall Length "L"	Part Number
1.50" 38mm	4.33" 110mm	C2280M
1.77" 45mm	4.53" 115mm	C2580M
1.89" 48mm	4.92" 125mm	C2880M
2.24" 57mm	5.51" 140mm	C3280M
2.50" 63.5mm	5.91" 150mm	C3680M
2.99" 76mm	7.62" 193.5mm	C4380M
3.74" 95mm	8.66" 220mm	C5780M
4.02" 102mm	10.24" 260mm	C6380M
4.49" 114mm	11.81" 300mm	C7580M
5.00" 127mm	13.39" 340mm	C8980M
5.51" 140mm	15" 380mm	C10280M

- All hex nuts and Couplers to exceed 110% of the bar's published.
- CN-Collar Nuts with 2 or 4 flats on top – HN Hex Nut.



SSSI HOLLOW CORE BARS-SELF DRILLING ANCHORS

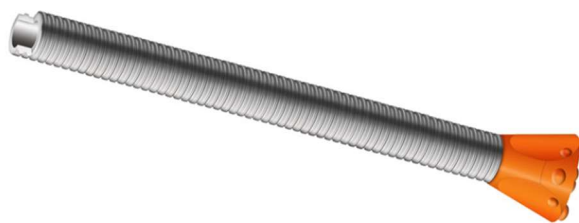
SIZE	Nominal Diameter mm	Nominal Diameter Inches	Nominal Inner Diameter	Ultimate Strength	Yield Load	Nominal Weight	Area Inch ² (mm ²)	Ultimate Stress	SSSI Part Number
RB38/19	38	1.50"	0.75" 19mm	119.1 Kips 530 kn	95.5 kips 425 kn	3.4 lbs/ft 5.0 kg/m	.99 640	96 KSI	HC3823B
RB51/32	51	2.0"	1.34" 34mm	188.8 Kips 840 kn	155.1 kips 690 kn	5.4 lbs/ft 8.0 kg/m	1.58 1020	98 KSI	HC5132B
RB63/47	63	2.48"	1.85" 47mm	260 Kips 1160 kn	209.1 kips 930 kn	7.2 lbs/ft 10.7 kg/m	2.11 1360	99 KSI	HC6347B
RB76/58	76	3.0"	2.28" 58mm	310.2 Kips 1380 kn	247.3 kips 1100 kn	9.8 lbs/ft 14.6 kg/m	2.88 1860	86 KSI	HC7658B
TB103/83	103	4.06"	3.27" 83mm	359.7 Kips 1600 kn	287.7 kips 1280 kn	13.3 lbs/ft 19.8 kg/m	3.91 2520	74 KSI	HC10383B
TB103/79	103	4.06"	3.11" 79mm	445.1 Kips 1980 kn	357.4 kips 1590 kn	16.3 lbs/ft 24.2 kg/m	4.78 3080	75 KSI	HC10379B
TB103/52	103	4.06"	2.05" 52mm	822.8 Kips 3660 kn	600 kips 2670 kn	29.1 lbs/ft 43.3 kg/m	8.54 5510	71 KSI	HC10352S
TB130/94	130	5.12"	3.70" 94mm	900 Kips 4003 kn	720 kips 3203 kn	32.6 lbs/ft 48.5 kg/m	9.58 6180	75 KSI	HC10394S
TB130/67	130	5.12"	2.64" 67mm	1784.9 Kips 7940 kn	1180 kips 5250 kn	50.3 lbs/ft 74.9 kg/m	14.79 9540	80 KSI	HC13067S
TB135/85	135	5.31"	3.23" 82mm	1213 Kips 5400 kn	971 kips 4320 kn	44.3 lbs/ft 65.9 kg/m	13.02 8400	75 KSI	HC13582S

- kn = Kilonewtons.
- All bars in stock of 3m.
- RB- R- Thread
- TB- T-Thread

Hollow Bar with R-Thread



Hollow Bar with T-Thread



The use of Hollow Core Bars, or Self-Drilling anchors, is becoming more popular in the deep foundations field. From Tie Backs and tie-downs in support of excavation applications, to piles in structural foundations, the use of hollow core bars is expanding.

Stressbar Steel Systems International, Inc. (SSSI), offers full-length threaded, high capacity, hollow core bars, ranging from 1-1/2" (38mm) nominal, to 5-5/16" (135mm). Our super hollow core bars – T103/51. T135/75 & T130/60, have greater steel areas, which significantly increase pile load capacities. Consequently, they efficiently reduce the required number of drilled holes in a given site. SSSI's hollow core bar has been successfully used in projects accomplishing design compression load capacities up to 300 tons. As an added benefit, SSSI's in-house engineering staff with over 25 years of experience in the deep foundations field can provide value engineering services for optimizing any of your upcoming projects.



SSSI HOLLOW CORE BAR ACCESSORIES



Spherical Nuts

OD mm	ID mm	DIR.
38	19	LH
51	28	LH
63	43	LH
76	56	RH
103	78	RH
103	83	RH
103	51	RH
130	60	RH
135	75	LH



Couplers

Max O.D.	Overall Length "L"	Part Number
2.13"	6.30"	C38160MB
2.48"	7.87"	C51200MB
3.15"	8.66"	C63220MB
3.74"	9.06"	C76250MB
5.00"	9.84"	C103250MB
5.00"	9.84"	C10325MB
5.24"	11.42"	C103290MC
6.61"	12.99"	C135330MB
6.61"	11.81"	C130300MC

➤ All hex nuts and Couplers to exceed 110% of the bar's published.



Drill Bits – Carbide with buttons (Widia)

			SSSI AVAILABLE DRILL BITS (OUTSIDE DIAMETER) mm								
BAR SIZE	ID mm	DIR.	76	90	115	130	150	200	220	250	300
38	19	LH	X	X	X						
51	28	LH			X	X	X				
63	43	LH		X	X		X				
76	56	RH			X		X	X			
103	78	RH					X	X	X	X	X
103	83	RH					X	X	X	X	X
103	51	RH					X	X	X	X	X
130	60	RH						X	X	X	
135	75	LH						X		X	



SSSI

Stressbar Steel Systems International

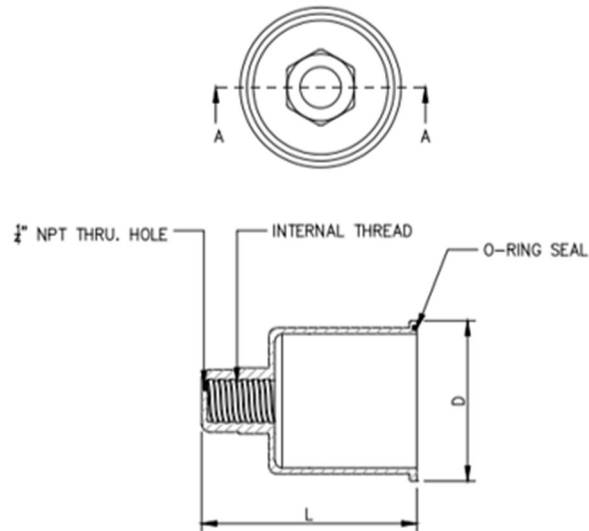
SSSI PVC THREAD BAR COVER CAP – END CAPS

Model: Thread Bar Protective Cap

Material: Plastic

As per PTI DC35.1-14, anchorage head covers are to be used if thread bar is exposed.

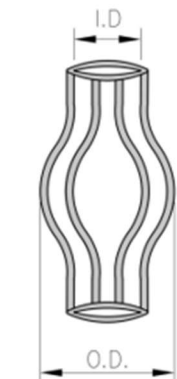
The caps are filled with corrosion-inhibiting compound (grease), grout or wax.



Bar Size Grade 150	D		L	
	mm	in	mm	in
1" (26mm)	137	5.375	183	7.188
1-1/4" (32mm)	137	5.375	183	7.188
1-3/8" (36mm)	137	5.375	183	7.188
1-3/4" (46mm)	137	5.375	308	12.125
2-1/2" (65mm)	175	6.90	251	9.875
3" (75mm)	175	6.90	251	9.875

- SSSI offers steel tube welded end caps – Custom made per specifications.

SCHEDULE 40 PVC CENTRALIZERS



NOMINAL SIZE (Inches)	PIPE ID	MAIN WALL THICKNESS	FORMED DIAMETER	
			Minimum OD	Maximum OD
Schedule 40 PVC				
0.75	0.82	0.113	2.00	6.0
1.00	1.05	0.133	2.00	10.0
1.25	1.38	0.140	2.50	12.0
1.50	1.61	0.145	3.00	16.0
2.00	2.07	0.154	3.50	18.0
2.50	2.47	0.203	4.50	20.0
3.00	3.07	0.216	5.00	36.0
4.00	4.09	0.237	5.50	36.0



SSSI

Stressbar Steel Systems International

SSSI HIGH DENSITY CORRUGATED TUBING

Scope:

This specification covers the Corrugated Tubing requirements for use in Double Corrosion Protection (DCP) Thread Bar Anchors.

Material:

High density polyethylene resin meeting or exceeding the requirements of ASTM D3350 Cell Class 424420C.

Tube Dimensions:

The nominal size of the tube is based on the nominal inside diameter of the tube. The tolerance on the specified inside diameter is +3% / -1.5%.

Joints:

The pipe is joined with external 'insert' or 'split' couplers.

Tube Stiffness:

The tube has a minimum stiffness of 210 kPa at 5% deflection. Tests are conducted in accordance with ASTM D2412.



Nominal	I.D.	O.D
2"	1.97"	2.48"
3"	2.95"	3.54"
4"	3.94"	4.72"

SSSI SMOOTH TUBING FOR DCP/SCP ANCHORS

Scope:

This specification covers the PVC Tubing requirements for use as bond breakers between grout and thread bar anchors.

Material: Rigid PVC pellet, extrusion compound.

Color: Black



Smooth PVC for DCP Thread Bars

Nominal	I.D.	O.D
3"	2.80"	2.90"
4"	3.86"	3.96"
5"	5.04"	5.14"

Smooth PVC for SCP Thread Bars

Nominal	I.D.	O.D
1.77"	1.77"	1.87"
2.56"	2.56"	2.66"
3.15"	3.15"	3.25"
4.33"	4.33"	4.43"
5.50"	5.50"	5.60"

- DCP: Double Corrosion Protection
- SCP: Single Corrosion Protection



SSSI
Stressbar Steel Systems International

SSSI HIGH DENSITY PE GROUT TUBING – HDPE



Nominal O.D.	Nominal I.D.	WALL	MAX PSI
7/16"	1/4"	0.625	272 PSI @70
1/2"	3/8"	0.625	194 PSI @70
3/4"	5/8"	0.625	123 PSI @70
1"	7/8"	0.625	90 PSI @70
1"	3/4"	0.125	195 PSI @70

○ @70 Degrees.

For industry-wide grouting requirements.
Six stock sizes available, standard 500' rolls each.

POST TENSIONING GREASE

PTG is manufactured using highly refined petroleum base stocks and additives to provide excellent corrosion protection, lubrication, and adhesion. PTG is a highly compounded corrosion preventive lubricant designed for use on coated tendons in the post tensioning industry. It meets or exceeds the "Performance Specification for Corrosion Inhibiting Coating" for un-bonded single strand tendons as published by the Post Tensioning Institute. PTG can be applied to tendons at ambient temperature for both extruded and manual plastic coating operations. Its film will remain both flexible and stable from below 0°F (-17.8°C) to 250°F (121.1°C) for the required lubricity during the post tension operation.

Applications: For use on API un-bonded single strand tendons as published by the Post Tensioning Institute.

Advantages: Meets or exceeds the Performance Specification for Corrosion Inhibiting Coating on Un- Bonded Single Strand Tendons published by the Post Tensioning Institute.

Excellent Adhesion.

Enhanced Additives for Maximum Corrosion Resistance.

Specifications: Meets or exceeds the Performance Specification for Corrosion Inhibiting Coating for un-bonded single strand tendons as published by the Post Tensioning Institute Doc # M 10.2-17 Consult local sales representative for available package sizes.



Available 55-Gal Drum



Available 5 Gal. Bucket



SSSI

Stressbar Steel Systems International

SSSI GRADE 80 PLATE SIZE RECOMMENDATIONS

SIZE	Nominal Diameter mm	Nominal Diameter Inches	Plate Size T" x H" x W"	Tensile Yield Point		Center Hole	SSSI Part Number
				Kips	kN		
#7	22	7/8"	1"x4"x4"	63	280	1.00"	BR2280S
#8	25	1"	1.25"x5"x5"	83	359	1.30"	BR2580S
#9	28	1-1/8"	1.25"x5.5"x5.5"	105	467	1.40"	BR2880S
#10	32	1-1/4"	1.25"x6"x6"	133	590	1.63"	BR3280S
#11	36	1-3/8"	1.25"x7"x7"	163	690	1.80"	BR3680S
#14	43	1-3/4"	1.25"x7"x7"	236	1019	2.13"	BR4380S
#18	57	2-1/4"	2"x9"x9"	420	1860	2.85"	BR5780S
#20	63.5	2-1/2"	2.5"x10"x10"	515	2230	3.10"	BR6380S
#24	75	3"	3"x12"x12"	719	3090	3.60"	BR7580S
#28	90	3-1/2"	3.5"x14"x14"	1009	4488	4.20"	BR8980S
#32	100	4"	4"x16"x16"	1278	5684	4.75"	BR10080S

- Based on 5,000 PSI Grout strength
- Based on Grade A36.



SSSI GRADE 150 PLATE SIZE RECOMMENDATIONS

Nominal Diameter mm	Nominal Diameter Inches	Plate Size T" x H" x W"	Tensile Yield Point		Center Hole	SSSI Part Number
			Kips	kN		
26	1"	1.5"x6"x6"	102	453	1.40"	BR26150S
32	1-1/4"	2"x7"x7"	150	667	1.60"	BR32150S
36	1-3/8"	2"x8"x8"	190	845	1.90"	BR36150S
47	1-3/4"	2.25"x9"x9"	323	1435	2.40"	BR45150S
*57	2-1/4"	2.5"x10"x10"	480	2135	3.0"	BR57150S
*65	2-1/2"	3"x12"x12"	620	2757	3.20"	BR65150S
*75	3"	4"x14"x14"	822	3556	3.60"	BR75150S

- Based on 5,000 PSI Grout strength
- *Based on 6,000 PSI Grout strength.
- Based on Grade A36.



SSSI HOLLOW CORE BAR PLATE SIZE RECOMMENDATIONS

Nominal Diameter mm	Nominal Diameter Inches	Plate Size T" x H" x W"	Tensile Yield Point		Center Hole	SSSI Part Number
			Kips	kN		
38	1.50	1.5"x6"x6"	95.5	425	1.75"	HC3823B
51	2.00	2"x7"x7"	155.1	690	2.25"	HC5132B
63	2.50	2"x8"x8"	209.1	930	2.75"	HC6347B
76	3.00	2.25"x9"x9"	247.3	1100	3.25"	HC7658B
103	4.05	2.25"x9"x9"	287.8	1280	4.25"	HC10383B
103	4.05	2.25"x9"x9"	357.4	1590	4.25"	HC10379B
103	4.05	3"x12"x12"	600.2	2670	4.25"	HC10352S
130	5.11	4"x14"x14"	720	3203	5.50"	HC10394S
135	5.31	3.5"x16"x16"	971.2	4320	5.75"	HC13067S
130	5.11	4.5"x20"x20"	1180.2	5250	5.50"	HC13582S

- Based on 5,000 PSI Grout strength
- *Based on 6,000 PSI Grout strength.
- Based on Grade A36.

SSSI offers in house plasma cutting up to 2" Thick.

All plates available for corrosion protection: Epoxy Coating and Hot Dipped Galvanization.

Plates are available with key holes or counter sunk holes.

SSSI's plate recommendations do not oversee the project specifications nor the structural engineer calculations.



SSSI

Stressbar Steel Systems International

TERMINATION ANCHOR NUT: TYPE TNxx75MC DATA SHEET

Description

Standard Terminating Anchor Nut

Product Configuration

Threadable to corresponding size threaded bar by Stressbar Systems Int.



Technical Data

Specifically designed to develop full tension load of SSI threaded bar

SSI Terminating Nuts are intended to replace what would be a traditional hook at the end of a nominal rebar for the yield strength development in tension of the bar itself.

Parts are machined threaded

Mechanical Data

Size	See Table "A"
Weight	See Table "I"
O.A Height	See Table "H"
Nut Diameter	See Table "B"
Washer Diameter	See Table "E"
Washer Thickness	See Table "F"

Environmental Data

Finish	Plain Un-coated
--------	-----------------

Material Data

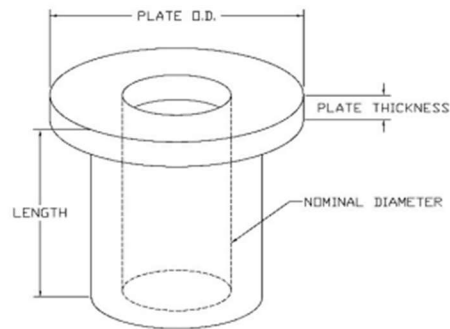
Nut	See Table "D"
Washer	See Table "G"

Related Documents

Part Drawing available upon request	See Table "J"
-------------------------------------	---------------

Ordering Information

Single Piece Available	Size / Grade / Terminating Nut
------------------------	--------------------------------



Terminating Nuts for Grade 75 SSSI Threaded Bars									
Bar Size	Nut			Washer			Height	Wight	Drawing
A	B	C	D	E	F	G	H	I	J
#	O.D [in.]	Length [in.]	Material	O.D [in.]	Thickness [in.]	Material	O.All [in.]	[lbs]	Title
8	1.77	1.97	Steel	3.50	0.375	Steel	2.35	1.25	TN2580D
9	1.89	2.16	Steel	3.63	0.375	Steel	2.54	1.70	TN2880D
10	2.24	2.36	Steel	3.88	0.375	Steel	2.74	2.01	TN3280D
11	2.50	2.56	Steel	4.25	0.375	Steel	2.94	2.35	TN3680D
14	3.00	3.74	Steel	6.00	0.375	Steel	4.12	4.50	TN4380D
18	3.75	4.33	Steel	8.00	0.500	Steel	4.83	7.80	TN5780D
20	4.00	4.53	Steel	9.00	0.500	Steel	5.03	8.80	TN6380D

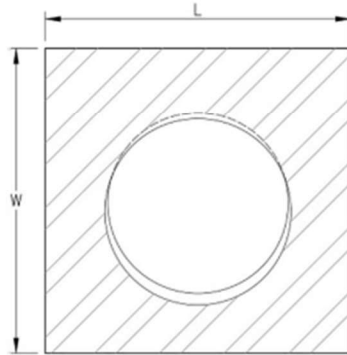
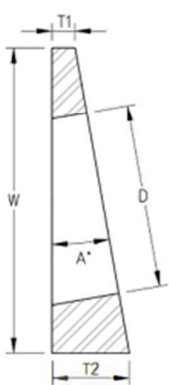


SSSI

Stressbar Steel Systems International

SSSI BEVELED WASHERS

TYPE		BAR SIZE		L & W		D		T1		T2		A deg
		NO.	INCHES mm	in	mm	in	mm	in	mm	in	mm	
A	#8 GR 80 & 1" GR 150	1	25	3.70	94.00	1.63	41.4	0.3	7.6	1.2	31.8	17
	#9 GR 80	1-1/8	28									
	#10 GR 80 & 1-1/4" GR 15	1-1/4	32									
	R38 HOLLOW BAR	1.5	38									
B	#11 GR 80 & 1-3/8" GR 15	1-3/8	36	4.18	106.2	1.97	50.0	0.30	7.6	1.38	35.1	17
	#14 GR 80	1-3/4	43									
C	1-7/8" GR 150	1-7/8	47	5.00	127.0	3.00	76.2	0.38	9.5	1.26	31.9	10
	R51 HOLLOW BAR	2.01	51									
	#18 GR 80	2-1/4	57									
	#20 GR 80 & 2-1/2" GR 15	2-1/2	63									
	R63 HOLLOW BAR	2.48	63									



SSSI HEAT SHRINKS

Model: CB-HFT600

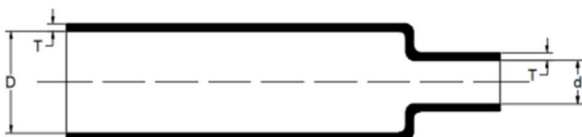
Material: Irradiated cross-linked modified special polyolefin

Shrink Ratio and Operating Temperature: CB-HFT600 has a 2:1 shrink ratio and when fully recovered, the 2:1 material will shrink to one half (50%) of its original supplied diameter.

CB-HFT600 has a continuous operating temperature rating of -67 deg. F and 257 deg. F.

As per PTI DC35.1-14, heat-shrink sleeves are resistant to chemical attack, are non-detrimental to pre-stressing steel, and capable of withstanding abrasion and impact.

Item	Size		Shrink Ratio	Shrink Diameter	
	mm	in		mm	in
75mm Ht Shrink Black	75	2.95	2:1	37.5	1.48
100mm Ht Shrink Black	100	3.94	2:1	50	1.97
120mm Ht Shrink Black	120	4.72	2:1	60	2.36
150mm Ht Shrink Black	150	5.91	2:1	75	2.95
180mm Ht Shrink Black	180	7.09	2.5:1	70	2.76





SSSI

Stressbar Steel Systems International

Visit our website:

www.stressbarsystems.com

Follow us on LinkedIn

Email: sales@stressbarsystems.com

Corporate Headquarters

6001 Bordertown Ave.

Sayreville, NJ 08872

Phone: 201.366.0974

Distribution Plant

482 Nordhoff Pl

Englewood, NJ 07631

Phone: 201.366.0974

We meet the industry standards.

We are current members of the following organizations:

